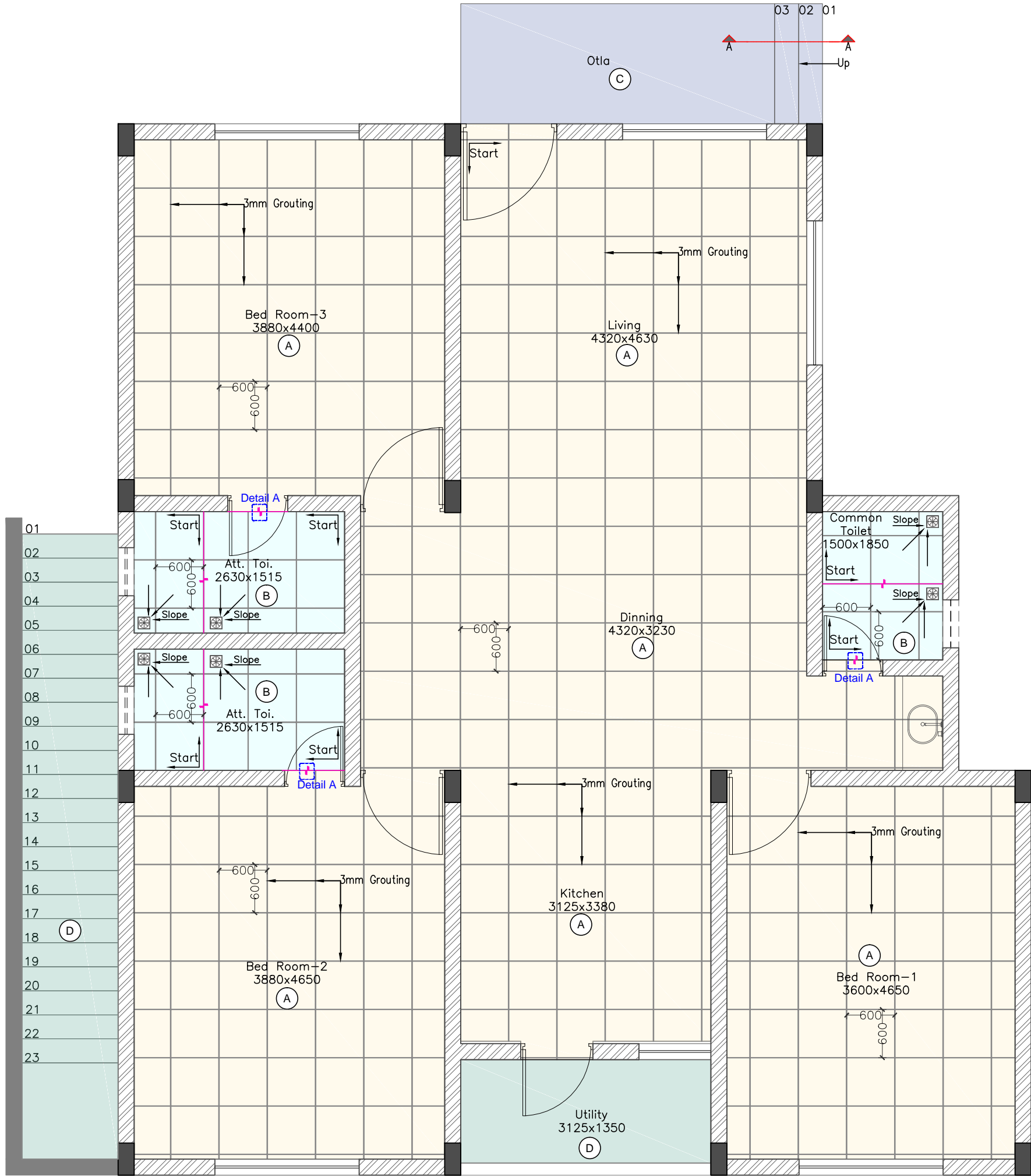


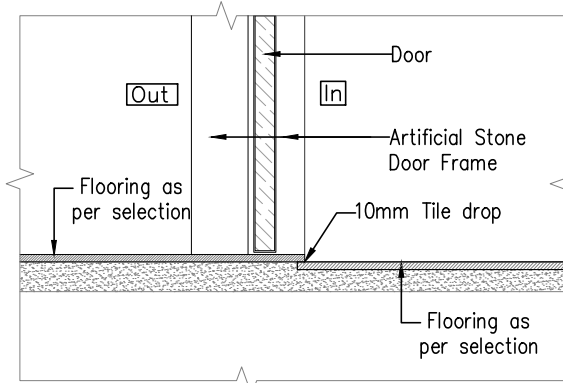
LAST SAVED BY: kpatel1 7/3/25 3:31 PM

This drawing is property of Mamta Shah & Associates. Without our prior consent, it must be neither copied nor made available to third parties for the purpose other than for which it is meant.



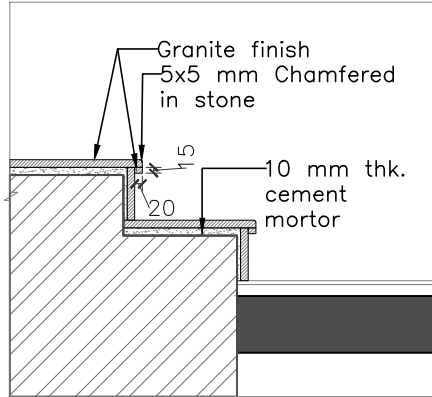
Legend for Flooring		
(A)		Vitrified Tile (600x600)
(B)		Vitrified Tile (600x600)
(C)		Granite Stone
(D)		Kota Stone
Matt Finish Vitrified Tile		

Hatch Legend	
	Proposed Brick Masonry
	Proposed RCC Structure



Detail_A
Scale 1:10

Legend	
	Start Point
	Tile Drop



Section-AA
Scale 1:20

RO	08-03-25	SC & PR	GMDC	Tender	KBP
Rev	Date	Issued	Issued to	Issued for	Author

Key Plan:

Project:	SKVM				
Drawing:	Flooring Layout_GF GM Bunglow Sheet 01 OF 02				
Drawing Code:	2331_ARC_TD_06_R0				
Print Size:	A3		Scale:	1:50	
File Title:	2331_ARC_TD_06_R0				
Project Code:	MSA 2331	Project Type :	ARC & INT	Location :	Mandvi
Print Date	Drawn By		Checked By	Approved By	
7-Mar-25	K Patel		K Patel	M Shah	

MAMTA SHAH & ASSOCIATES
Architects & Interior Designers
C-12, Chanakyapuri Society,
Chanakyapuri Char Rasta,
New Sana Road, Baroda
Ph. No. +91 365 2715267 / 2710967
mamta@msain.com / www.msain.com

Client:

Gujarat Mineral
Development Corporation